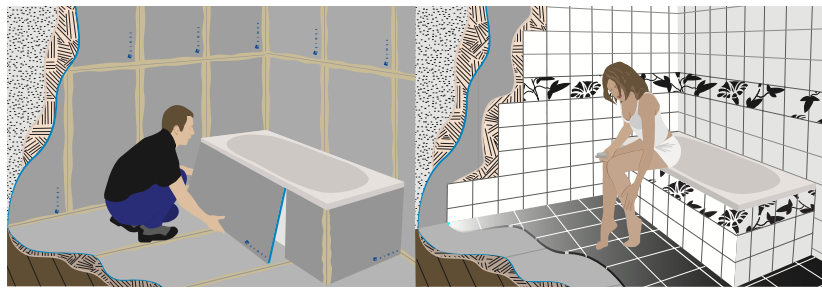


marmox boards

Marmox Board is the perfect solution for insulating and waterproofing in one operation. It is ideal to use as insulation coverings for most internal construction tasks and can be fixed to any suitable framework, whether brick, wood or metal. To Marmox-proof a room is very easy for a single person as the boards are lightweight and very easy to cut with a saw or knife. Marmox has been tested to hold a tile weight of 62kg/m², double that of plasterboard and stronger than many other tile backer boards.

Marmox boards are made of extruded polystyrene and are fully waterproof, not allowing any water to pass through them in the way expanded polystyrene boards do. Each face of the board is covered with a close woven fibreglass mesh embedded in a cement polymer mortar.



marmox board sizes

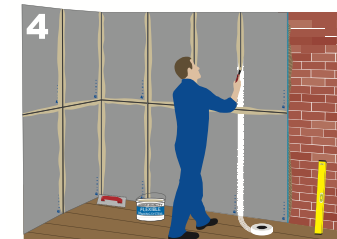
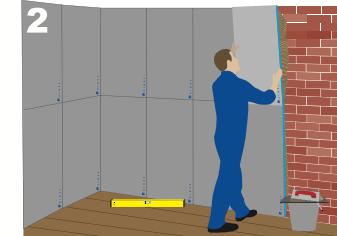
thickness (mm)	width (mm)	length (mm)	weight (kg)
6	600	1250	1.95
10	600	1250/2500	2.22/4.44
12.5	600	1250/2500	2.28/4.56
20	600	1250/2500	2.48/4.96
30	600	1250/2500	2.74/5.48
40	600	1250/2500	3.00/6.00
50	600	1250/2500	3.26/6.52

technical data

Compressive Strength	ASTM D 1621	3.71kg/cm² (371kN/m²)
Bond Strength	BS EN 1384	0.3N/mm²
Water Absorption (Immersion)	DIN 53428	0.02% by vol
Water Absorption (Capillary)	DIN 53428	Nil
Coefficient Of Linear Expansion		30 x 10⁻⁶
Flammability	DIN 4102	B1
	BS 476 Part 6,7	Class '0'

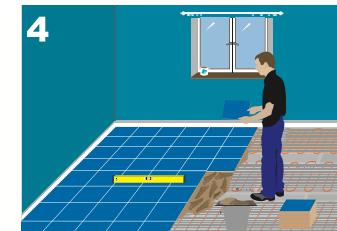
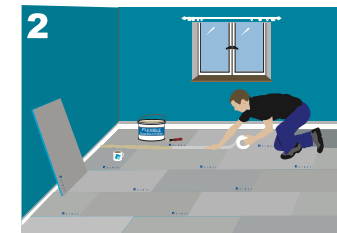
Disclaimer: The typical data shown on this leaflet is intended as a general guide and is based on test carried out under controlled conditions.

wall application



- Using a notched trowel, apply a bed of flexible adhesive (minimum of 6mm) to the wall.
- Offer boards up to wall and bed firmly into place.
- Waterproof using a silicon sealant along board edge and butt adjacent board up to it.
- For stud walling, vertical timbers at 300mm centres. All boards to be supported by at least 9 fixings per board (see diagram 3).
- When boards are securely in place (ie, adhesive dry or screw fixed) tape joints with fibreglass mesh tape.
- Prime boards with a pva wash 1/5 and apply plaster while still wet or tile and grout in the usual way.

floor application



- Using a notched trowel, apply a bed of flexible tile adhesive to the floor.
- Lay boards on floor in a chequer plate fashion.
- For wet floor area use a good quality waterproof compound or waterproof tape.
- For other areas tape all joints with a fibreglass mesh tape.
- Now lay any heating element and tape it into position, if desired.
- Again using flexible tile adhesive fix the floor.
- Seek adhesive manufacturers advice for fixing to timber floors.
- **Note:** Tiles no smaller than 50x50mm should be used.