

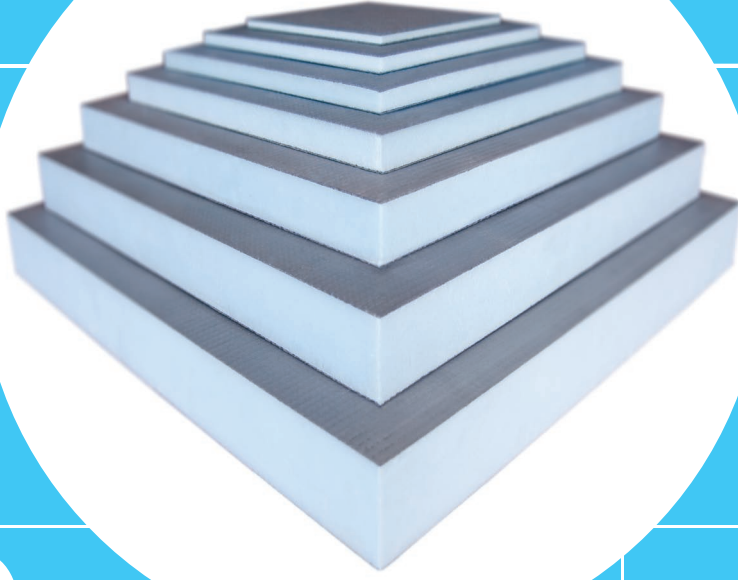
**WALL APPLICATION**

# Introduction

Marmox Construction Board is the perfect solution for insulating and waterproofing in one operation. It is a high performance reinforced insulation board made of waterproof extruded polystyrene, it has a fibreglass mesh embedded in a cement polymer mortar on each face.

This technically advanced product will waterproof the wall. Unlike most other wall finishes, it will remain unaffected by damp, and so tiles stay fixed.

# CONSTRUCTION BOARD

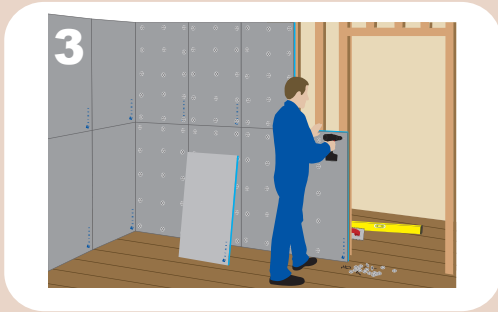
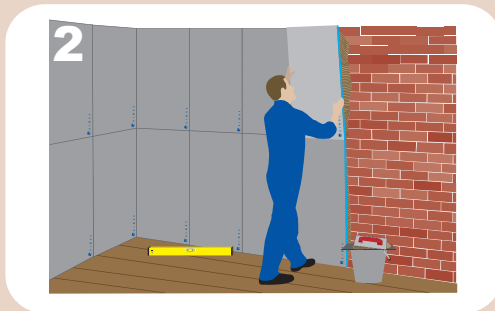


# PRODUCT INFORMATION

Marmox Multi-Purpose Construction Boards are the answer to nearly all internal construction schemes. Made of extruded polystyrene with fibreglass mesh embedded in a cement polymer mortar on both sides. The boards are tough, lightweight, waterproof, with up to 25 decibels of sound insulation and a U value of up to 0.54 W/m<sup>2</sup>k.

Marmox construction boards are ideal to use as insulation coverings for most internal construction tasks. The boards can be fixed to any suitable framework, whether brick, wood or metal. The structure of the board allows it to be cut easily by saw or knife. Once the board joints have been reinforced with a self-adhesive fibreglass tape, tiling can begin.

## HOW TO USE



For full installation instructions please contact your supplier.

## ADVANTAGES

- **HIGH THERMAL INSULATION**
- **HIGH COMPRESSIVE STRENGTH COMPARED TO SIMILAR MATERIALS**
- **CLOSED CELL STRUCTURE MEANS NO WATER OR HUMIDITY ABSORPTION - WATERPROOF**
- **NOT AFFECTED BY THE FREEZE/THAW CYCLE**
- **SAFE TO USE - ASBESTOS FREE**
- **EASY TO CUT WITH A KNIFE OR SAW**
- **CFC AND HCFC FREE**
- **BOARDS ARE LIGHT ENOUGH TO BE CARRIED AND INSTALLED BY ONE PERSON**
- **BOARDS FIX OR BOND TO ANY SURFACE**
- **READY TO RECEIVE PLASTER AND/OR TILES**
- **SOUNDPROOFING PROPERTIES**
- **10 YEAR MANUFACTURERS WARRANTY**

Disclaimer: The typical data shown in this leaflet is intended as a general guide and is based on tests carried out under controlled conditions.

**marmox UK Ltd**  
 Unit 3 Forward Way, Laker Rd, Rochester, Kent. ME1 3QX. UK  
 Tel: 01634 862277 Fax: 01634 864223 www.marmox.com  
 E-mail: info@marmox.com

## APPLICATIONS

### BOARD SIZES

4.50  
2.70  
2.16  
1.35  
0.90  
0.67  
0.54  
U Value (W/m<sup>2</sup>k)

1.95  
2.22  
4.57  
2.48/4.96  
2.74/5.48  
3.00/6.00  
3.26/6.52  
Weight (Kg/Board)

Long boards only sold in pallet quantity

1250  
1250  
2500  
1250/2500  
1250/2500  
1250/2500  
1250/2500  
Length (mm)

600  
600  
600  
600  
600  
600  
600  
Width (mm)

6  
10  
12.5  
20  
30  
40  
50  
Thickness (mm)

### TECHNICAL PROPERTIES

Density	36kg/m <sup>3</sup>
Thermal Conductivity	0.027 watt/mK
Thermal Conductivity (5 years)	0.032 watt/mK
Compressive Strength	3.0kg/cm <sup>2</sup> (300kN/m <sup>2</sup> )
Water Absorption (Immersion)	0.02% by vol
Water Absorption (Capillary)	Nil
Coefficient Of Linear Expansion	30 x 10 <sup>-6</sup>
Flammability	B1 Class '0'
DIN 53420	
DIN 52612	
DIN 52612	
DIN 53421	
DIN 53428	
DIN 53428	
DIN 4102	
BS 476 Part 6,7	