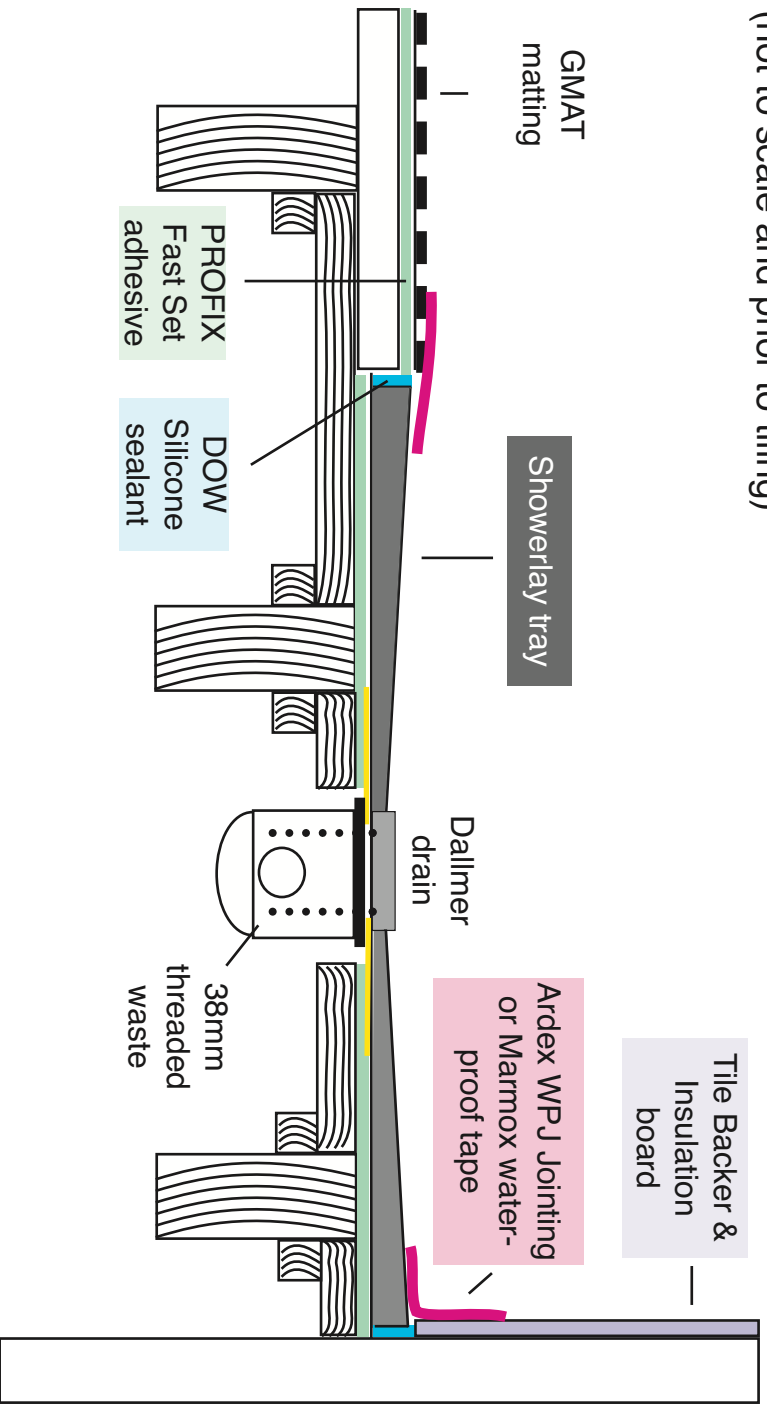


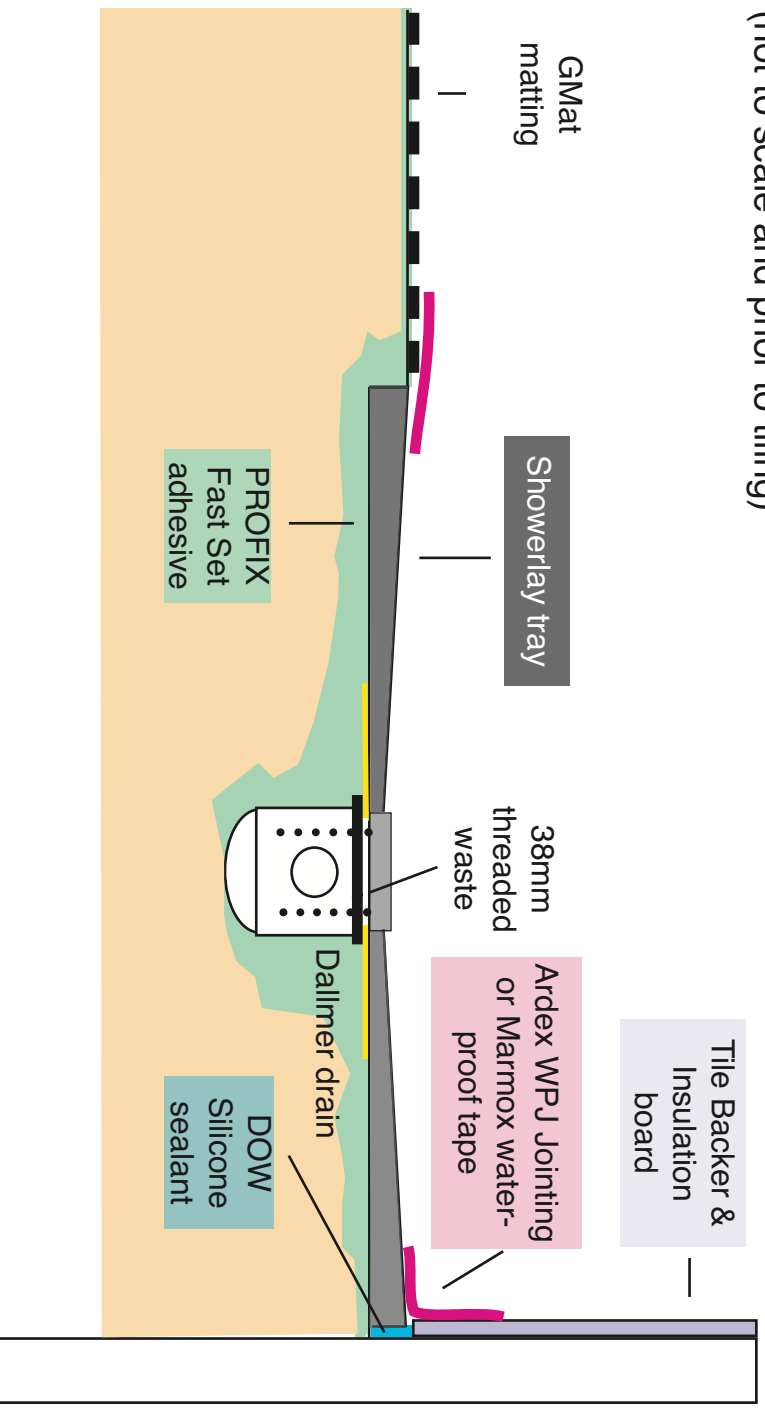
## Shower tray fitted to timber floor

(not to scale and prior to tiling)



## Shower tray fitted to screeded floor

(not to scale and prior to tiling)





**1** Decide where the Showerlay is going to be positioned and make sure the area is clear and dirt free. Lay the Showerlay down into place.



**2** Mark out the drain position on the floor.



**3** Cut out a hole big enough to fit the Dallmer drain. This should be slightly larger than the mark made on the floor and should allow room for the Dallmer drains knuckle.



**4** Position the pipework. Make sure the Dallmer drain lines up correctly and then connect the pipework to the Dallmer drain using a solvent weld.



**5** Place the black rubber ring onto the top of the Dallmer drain.



**6** Make sure the floor is level in all directions.



**7** Using Marmox Acrylic Sealant or alternatively a good quality cement based adhesive, stick the Showerlay to the floor.



**8** Push the Showerlay down firmly to the floor and then check again to make sure all is level and there is no movement at all.



**9** Screw the plastic ring through the Showerlay into the Dallmer drain making sure the black rubber ring is in position.



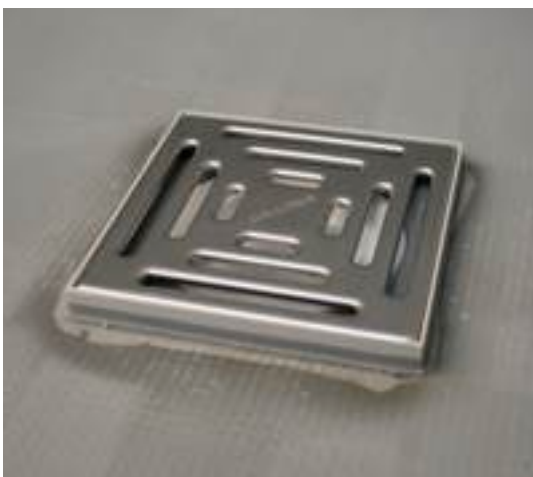
**10** Using the tool provided, screw the plastic ring as tight as possible.



**11** Place the hair trap inside.



**12** Push in the white funnel.



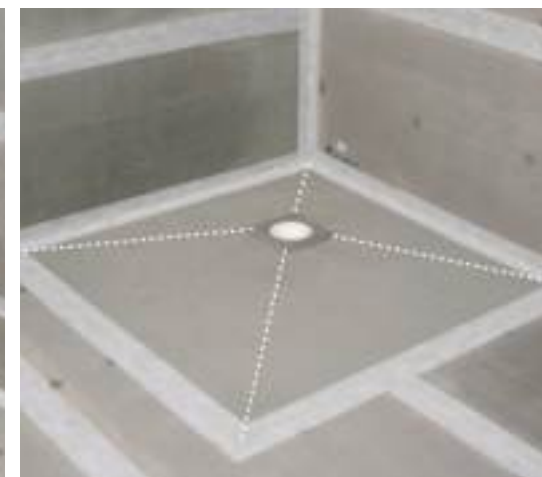
**13** If necessary place the plastic height extension piece on for thicker tiles and then position the grill.



**14** Using 20mm Marmox boards, cover the rest of the floor. Fix down using a good quality cement based tile adhesive or screws and washers at every 30cm.



**15** Tape around the main wet areas with Marmox Self Adhesive Waterproof Tape. Now tiling can begin directly onto the Marmox.



**16** If using tiles larger than 10cm on the Showerlay they should be cut along the lines shown above.