

***BONDS THE IMPOSSIBLE.***

***GEL ADHESIVES***  
***BIO GEL<sup>®</sup>***



## IT ALL STARTS HERE

The 9 eco-friendly advanced research and development laboratories within the futuristic Kerakoll GreenLab represent the world's most advanced technology centre for the study and development of new materials for GreenBuilding.

The new Biogel® gel adhesives, was a challenge won by the GreenBuilding engineers at Kerakoll's GreenLab for professional installers.



**GEL**<sup>®</sup>  
TECHNOLOGY

**GreenLab**  
Kerakoll Innovation Center

*The Kerakoll science park, which houses the new Kerakoll GreenLab research centre, is dedicated to research and technological development in the field of green building materials. The futuristic building groups all the Kerakoll group's new scientific laboratories together to form a single research centre, with an exclusive green technology program. Kerakoll offers each customer specific solutions that include 20 ranges of innovative products and 1,700 eco-friendly options with which to design, build and live in harmony with the environment and in a state of well-being, together with high added value services such as planning, technical consultancy, training and on-site assistance.*

# FROM ADHESIVE

KERAKOLL  
The GreenBuilding Company

# TO GEL ADHESIVE

## OLD C2 CEMENT-BASED ADHESIVE

**Thickens** quickly in the bucket

**You have to make a stiff mix** to make sure it doesn't shrink

The mix is stiff and **more difficult** to work with

Sets quickly and **doesn't wet the tile thoroughly**

**Performance varies** from one adhesive to another, and it's hard to make the right choice

# BIOGEL®

**GLOBAL BREAKTHROUGH**

It **doesn't thicken**, and it keeps in the bucket just the way you made it for long periods

Make the mix **however you want it**, because it never shrinks

The mix is soft so **you can work better** with less effort

The thixotropic and liquid consistency **wets the entire tile**, even after a long time

**Performance is always superior** and it works for everything and on everything



Using GEL-TECHNOLOGY®, Kerakoll has opened a new frontier in Research Technology, able to investigate how natural ingredients actually behave and formulate innovative adhesives that behave like a gel.

# GEL®

TECHNOLOGY





Biogel® gel adhesives are the first and only single products because they work with everything and on everything.

# BIOGEL®

**THE 1<sup>ST</sup>  
MULTIPURPOSE  
GEL ADHESIVES**

*“ Every day I find new and difficult substrates and materials to be laid. Biogel® No Limits® and Biogel® Revolution® are multipurpose and are the only products that solve any laying problem on any site. Every time. ”*



**CONCRETE**  
*checking absorption*



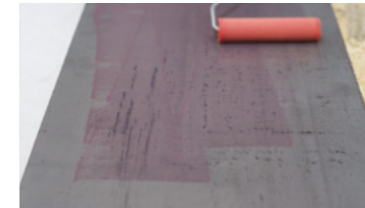
**CERAMIC TILES**  
*cleaning and drying*



**CEMENT-BASED SCREED**  
*checking hardness and cleanliness*



**TIMBER**  
*Keragrip Eco*



**METAL**  
*Keragrip Eco*



**PVC**  
*Keragrip Eco*

# **BIOGEL**® THE 1<sup>ST</sup> GEL ADHESIVES THAT

# MAINTAIN THEIR SHAPE



Biogel® gel adhesives are thixotropic, smooth, and light at any thickness. Works easily even on walls, with no tile slippage.



**Thixotropic and liquid mix**



**Supports the tile**



**Doesn't shrink**

**“ I was tired of stiff mixes to support the tiles.**

**With Biogel® No Limits® and Biogel® Revolution® I found a new thixotropic and liquid consistency that lets me work better and more safely. ”**



# BIOGEL®

## THE 1<sup>ST</sup> GEL ADHESIVES WITH FULL WETTABILITY



*“ Biogel® No Limits® and Biogel® Revolution® are different because they easily wet the whole tile and substrate. This way I’m always sure, even in the toughest situations on any job site. ”*



### COMPARATIVE TEST

# BIOGEL®

Biogel® gel adhesives guarantee maximum adhesion through full wettability of the tile under any conditions.

### OLD C2 CEMENT-BASED ADHESIVE

# BIOGEL<sup>®</sup>

## THE 1<sup>ST</sup> STRUCTURAL

## GEL ADHESIVES

Biogel<sup>®</sup> No Limits<sup>®</sup> and Biogel<sup>®</sup> Revolution<sup>®</sup> structurally bond the substrate to the tile thanks to the Kerakoll geo-binder, and guarantee long-lasting adhesion over time.



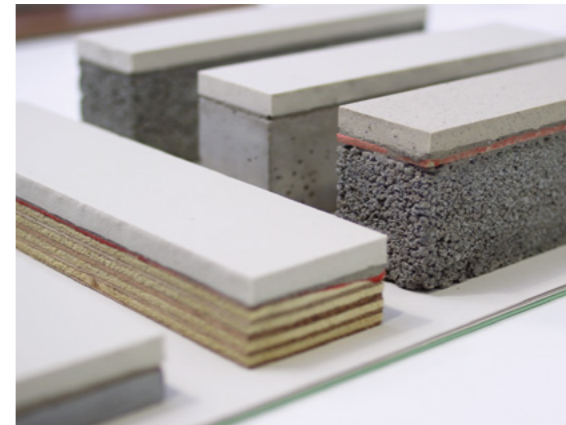
*“ Biogel<sup>®</sup> No Limits<sup>®</sup> and Biogel<sup>®</sup> Revolution<sup>®</sup> don't detach from tiles or substrates even when they are heavily stressed. So there's never any doubt about my work. ”*



### LOAD TESTING



**Substrates:**  
cement-based screed  
concrete  
timber  
metal  
PVC



# BIOGEL<sup>®</sup>

THE 1<sup>ST</sup> GEL  
ADHESIVES WITH

GUARANTEED  
FLEXIBILITY



Preparing Keragrip Eco



Applying Biogel<sup>®</sup>



Laying tiles

*“ I don't like using highly deformable adhesives because they aren't very workable. Biogel<sup>®</sup> No Limits<sup>®</sup> and Biogel<sup>®</sup> Revolution<sup>®</sup> are the only single-component products that can give me a guarantee even on unstable substrates, without sacrificing its improved workability. ”*

Biogel<sup>®</sup> gel adhesives stand up to stresses on the most deformable substrates thanks to the excellent shear strength of the exclusive new low-environmental-impact resins.





GEL ADHESIVE

# BIOGEL<sup>®</sup> REVOLUTION



Grey

White

THE 1<sup>ST</sup> GEL ADHESIVE FEATURING THE LONGEST WORKABILITY WITH ACCELERATED ADHESION.



GEL ADHESIVE

# BIOGEL<sup>®</sup> NO LIMITS



Grey

White

THE 1<sup>ST</sup> GEL ADHESIVE THAT WILL BOND ANYTHING.

SUBSTRATES NO LIMITS

MATERIALS NO LIMITS

USES NO LIMITS

HYBRID GEL ADHESIVE

# BIOGEL<sup>®</sup> EXTREME



HYBRID GEL TECHNOLOGY

THE 1<sup>ST</sup> ULTRA-DEFORMABLE HYBRID GEL ADHESIVE THAT BONDS EVERYTHING.



GEL ADHESIVE

# BIOGEL<sup>®</sup>

BIOGEL<sup>®</sup> GEL ADHESIVES ARE THE ONLY ONES THAT ENSURE STRUCTURAL ADHERENCE THAT BONDS ALL TYPES OF MATERIALS TO ALL SUBSTRATES AND FOR ANY TYPE OF USE.

GEL<sup>®</sup> TECHNOLOGY HYBRID GEL<sup>®</sup> TECHNOLOGY

GEL ADHESIVE  
**BIOGEL**<sup>®</sup>

*“ Are you ready  
to work better?*

*With  
BIOGEL<sup>®</sup> GEL ADHESIVE  
you can! ”*

**FEEL THE DIFFERENCE!**



**Learn more**



Kerakoll channel UK



MKT-TEC - Printed on 07/2020  
Ref. GBR Data Report - 07/2020